

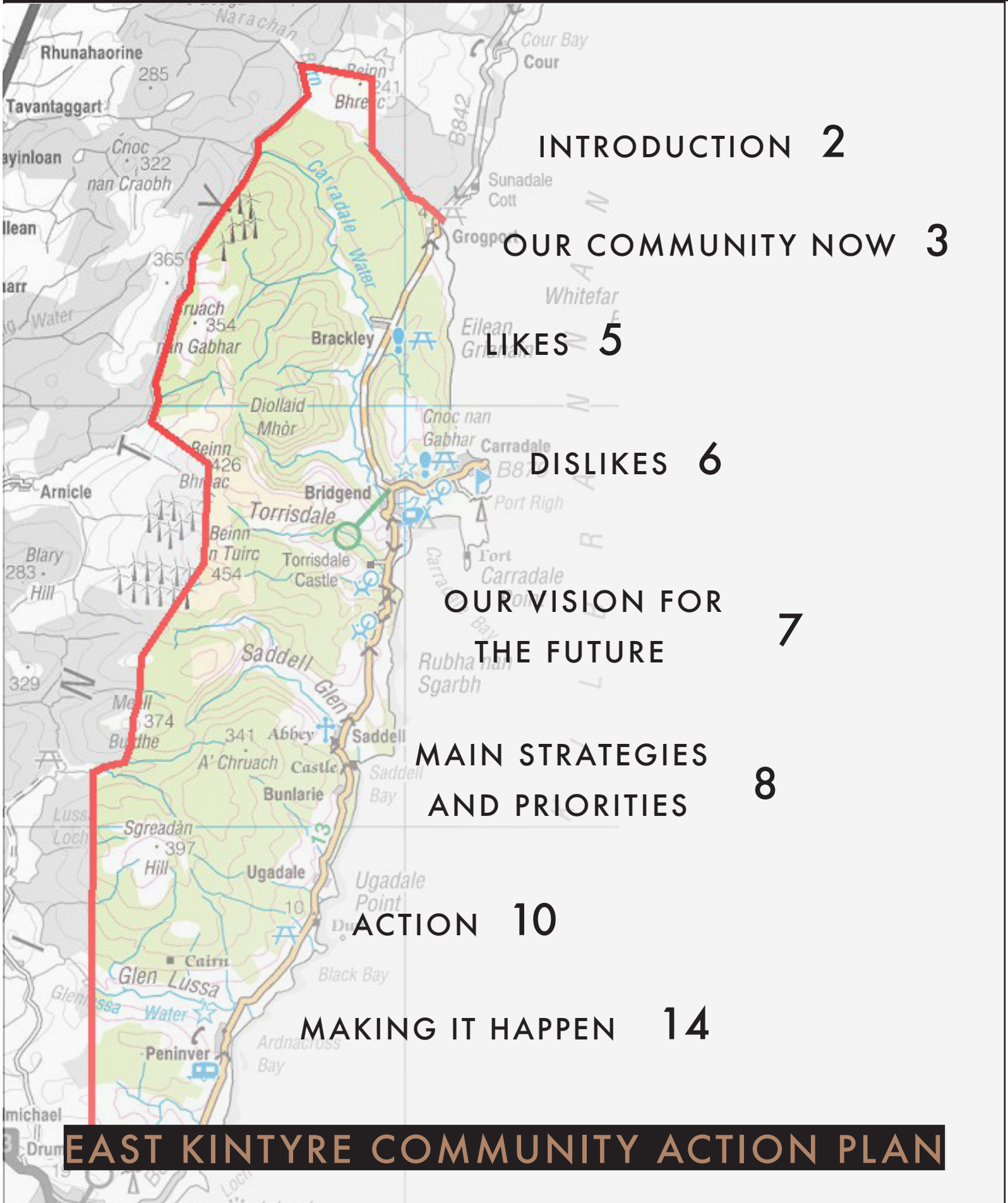
EAST KINTYRE COMMUNITY ACTION PLAN 2012 - 2017

East Kintyre Community Futures Steering Group



SOUTH KINTYRE DEVELOPMENT TRUST

CONTENTS



INTRODUCTION 2

OUR COMMUNITY NOW 3

LIKES 5

DISLIKES 6

OUR VISION FOR THE FUTURE 7

MAIN STRATEGIES AND PRIORITIES 8

ACTION 10

MAKING IT HAPPEN 14

INTRODUCTION

161 COMMUNITY VIEWS SURVEY FORMS WERE RETURNED
FROM OUR **426** HOUSEHOLDS

22 STAKEHOLDER MEETINGS AND INTERVIEWS WERE HELD WITH LOCAL GROUPS,
BUSINESSES, AND SUPPORT ORGANISATIONS

37 PEOPLE ATTENDED THE COMMUNITY FUTURES EVENT

This Community Action Plan summarises community views about:

- East Kintyre now
- the vision for the future of East Kintyre
- the issues that matter most to the community
- our priorities for projects and action.

The plan will be our guide for what we - as a community - try to make happen over the next 5 years.

SOUTH KINTYRE COMMUNITY FUTURES

South Kintyre Development Trust is working to assist four community council areas in South Kintyre to prepare their own Community Action Plans.

The East Kintyre Community Futures Steering Group was set up to manage the process in East Kintyre and was made up of representatives from East Kintyre Community Council, Carradale Harbour Users Group, Carradale Network Centre, Kintyre Antiquarian Society and local residents.

LOCAL PEOPLE HAVE THEIR SAY

The Action Plan has been informed by extensive community engagement carried out over a four month period from October 2011 to January 2012.

The process involved:

- stakeholder interviews and meetings with different groups and individuals representing all aspects of the community;
- carrying out a community views survey, which was delivered to all households; preparing a community profile detailing facts and figures about the community;
- organising a Community Futures Event.

EAST KINTYRE COMMUNITY ACTION PLAN

OUR COMMUNITY NOW



We have summarised below the main facts and figures from the Community Profile and some of the views from the Community Views Survey. Full copies of these reports are available on the South Kintyre Development Trust web site: www.skdt.org

EAST KINTYRE COMMUNITY PROFILE 2012 SUMMARY

Location

The area is considerably harder to access than the most of the Kintyre peninsula, however, once accessed East Kintyre offers some of the most picturesque landscapes and stunning coastal views in the West of Scotland. East Kintyre is classed as a very remote rural area by the Scottish Government.

Population

There are around 815 people in East Kintyre. The population is spread across four main settlements – Carradale, Peninver, Saddell, and Grogport and the wider rural area. Carradale is the largest of the settlements with around 500 residents.

The population has been in decline over the last 10 years and has a very high percentage (almost 40%) of

residents of pensionable age. The working age population is now less than 50% of the total population.

Housing

There is a high level (70%) of owner occupation in the area compared to Argyll (64%) and Scotland (62%). There is also a relatively high percentage of private rented housing and fewer social rented households. Lower than average house prices in the area mean that it should be easier for first time buyers and people moving to the area to purchase a home, although low average wages mean this is not always the case.

Economy and Jobs

Agriculture, forestry and fishing are still major contributors to the local economy making up jointly over 20% of the employment. The other main sectors are manufacturing and health and social work.

While other sectors have been in decline tourism has been a steady part of the local economy and many believe it has the potential to grow further. Many Hotels, B&B's, Caravan and self catering businesses are located within the area, providing employment and continuing to attract visitors year after year.

There is a high level of self employment (21%) –almost double the percentage of Argyll and Bute and over 3 times higher than Scotland.

EAST KINTYRE COMMUNITY ACTION PLAN

OUR COMMUNITY NOW

Education

- Primary School - the area is served by Carradale Primary and Castlehill Primary in Campbeltown.
- Secondary School pupils go to Campbeltown Grammar School in Campbeltown

Health and Care

- Carradale Surgery provides a range of services including physiotherapy, podiatry, diabetes nurse, and Alcohol and Drugs Advisory Service nurses
- The nearest hospital is in Campbeltown and for more specialist consultation patients travel to Oban or Glasgow.
- Red Cross provides a community transport service to help those without cars.
- There is an Abbeyfield sheltered housing facility in Carradale
- Care in the community is provided primarily by Argyll and Bute Council.

Community and Recreational facilities and organisations

- Local facilities include Peninver Village Hall, Carradale Village Hall, Carradale Playing field, Carradale Play park, Carradale Golf Club
- Groups include Carradale

Amateur Football Club and Carradale Cricket Club

Roads and Transport

East Kintyre is connected to Campbeltown in the South and Skipness in the North by the single track B842. There is a public bus service to and from Campbeltown, and an airport with two flights a day on weekdays to Glasgow. Community transport is available through the Red Cross.

Since the closure of the fuel station in Carradale there is no fuel supply in the area and residents in Carradale have an hour round trip to fill their vehicles.

Emergency Services

- Police station in Carradale
- Ambulance Services in Tarbert and Campbeltown.
- Carradale Fire Station run by volunteers
- Volunteer coastguard based in Carradale.

Environment

- East Kintyre has stunning beaches including - Grogport Beach, Carradale Bay (over a mile of sandy beach), Saddell Bay (featured in the Mull of Kintyre video by Paul McCartney and Wings) and Peninver Sands.
- Paths include the Kintyre Way a long distance route across the Kintyre Peninsula and a number of local walks e.g. Deer Hill Walk, Sally's Walk, and Kirnashie Walk.
- Environmentally designated sites include Torrisdale Cliff and the Kintyre Goose Lochs – Black Loch, Peninver.

Heritage

Saddell is home to several important historical sites including a 12th century abbey, a 16th Century castle and an 18th Century Manor House. This makes it a popular destination with tourists. Saddell Abbey has been restored by the Saddell Abbey Trust and a small car park and interpretation boards help to make it accessible for locals and visitors to the area.

Network Carradale Heritage Centre and Tea Room provides an insight into life in Carradale over the centuries.

OUR COMMUNITY NOW

LIKES



- The people and the nature of the community **86%**
- The environment – Landscape, coastal location, etc. **50%**
- Services and facilities – Golf course, village halls, etc. **26%**
- No comment **3%**
- Everything **3%**
- Nothing **1%**
- Other – The focus on improvement/Carradale Harbour Users Group **1%**

WHAT PEOPLE SAID:

People, peace and tranquillity

It's true community spirit

The beautiful quiet and the fact that children are free to play out of doors in this beautiful place

The quiet, friendly people and active social life

A lovely scattered settlement in a picturesque woodland landscape and magnificent seascape.

The view along shore road from the quay

Paths are kept in good condition to enable people to enjoy the out of doors

Easy access to forest walks and beaches

An excellent village hall..good Network Centre

Choice of hotels and eating places, the golf course

Carradale hotel, the village shop and bakery, post office

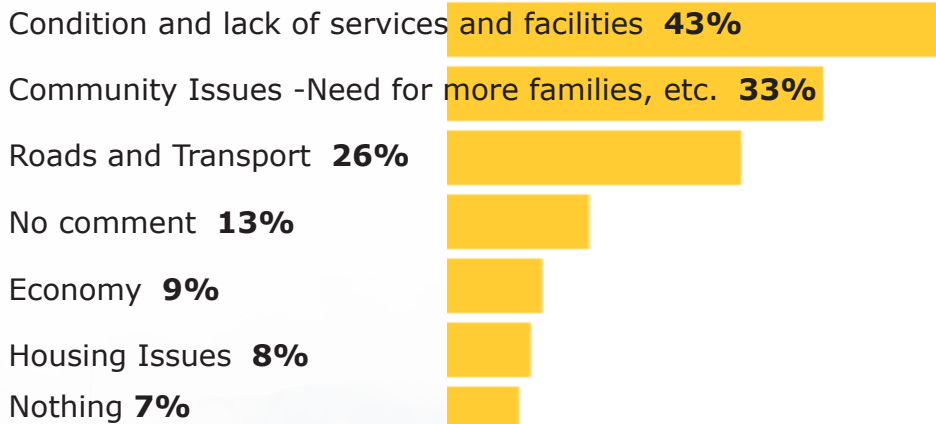
Good transport links to Campbeltown

Excellent GP and nursing services with friendly staff

Good bus service and drivers always helpful

Access to the shop, school, pub

OUR COMMUNITY NOW DISLIKES



WHAT PEOPLE SAID:

- Village needs a major tidy up. Especially at the head of the quay.
- State of the Harbour.....The harbour area – on land and at sea
- No petrol station in the village
- Lack of proper broadband, poor quality phone lines
- The fact that people are no longer as friendly as they used to be...
- Division between locals and incomers
- Events unsupported sometimes i.e. dance at the weekend
- The apathy of the majority of the people regarding local events, clubs, etc.
- Nothing to keep young people in the village, neither work or leisure.
- Extremely poor roads and the serious lack of investment in the upkeep and maintenance of the roads.
- Disrepair of Skipness to Carradale road with overgrown verges
- My only fear is for the future of local transport...the Red Cross transport withdrawn...and now we hear at least one of the Carradale – Campbeltown buses will be withdrawn...No Sunday bus service
- 30mph limit ignored
- The sense of it turning into a retirement village with decreasing jobs
- Lack of permanent employment is a problem
- Too many under used holiday homes
- There is nothing I dislike about my community

OUR VISION FOR THE FUTURE

This statement has been prepared to summarise the main aspirations for the future as expressed by local people and organisations

A MORE VIBRANT COMMUNITY

- The area will be an attractive place for people of all ages to live in
- A community supportive of existing businesses and encouraging new businesses to establish themselves in the area.

AN AREA THAT PEOPLE WILL CONTINUE TO VISIT

- Enhancing the assets that we already have
- Creating new attractions that enhance the area
- Promoting the area

A MORE COLLABORATIVE COMMUNITY

- Residents, agencies and the local authority working together for the benefit of the community

A BETTER CONNECTED COMMUNITY

- Quality transport links that allow residents, businesses and visitors to easily access the community by car or by public transport.
- Broadband speeds and mobile phone signals that allows businesses and residents to live and work even in the remotest part of the area.

A CARING COMMUNITY

- Where vulnerable people receive the care that they need when they need it.

MAIN STRATEGIES AND PRIORITIES



These are the main strategies and priorities the community will work towards achieving in partnership with public agencies and other supporters.

TOURISM AND PROMOTION

The area has stunning beaches, beautiful forests, walks and a rich heritage. Local residents see potential in protecting, enhancing and promoting these assets. Uppermost for many was the need to make more of Carradale Harbour. Alongside this was the need to build on the success of other community initiatives like the Network Centre and encourage more development of facilities for tourists – a community buy out of The Glen to turn it into a community pub/café and craft centre was suggested.

Main priorities

- Upkeep and improvement of Carradale Harbour
- Developing and promoting our natural and cultural assets
- Developing hospitality for tourists and locals – e.g. The Glen/more café/tearooms

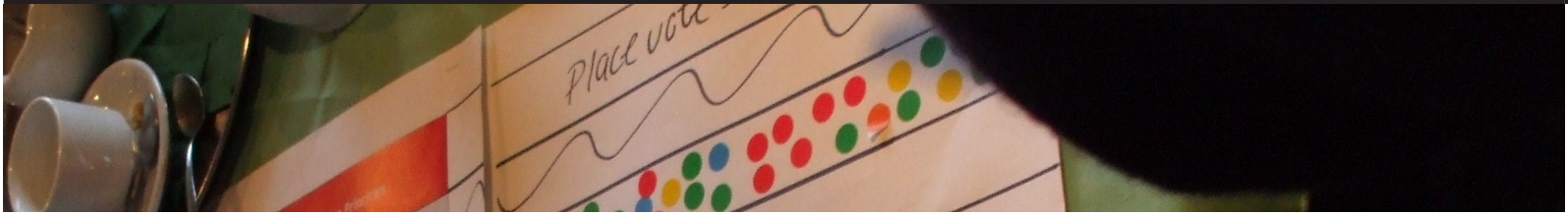
LOCAL SERVICES AND FACILITIES

A remote area with a low population is always going to find it difficult to retain services and the community needs to work closely with the public, private and voluntary sector to see how services can be retained, run and developed. The loss of the fuel station has seriously affected the viability of the area and an initiative to establish a community owned fuel station is being led by Network Carradale energy group and needs to be supported.

Main priorities

- Developing a local fuel station and garage facilities
- Improving after hours GP service
- Improving services for the elderly

MAIN STRATEGIES AND PRIORITIES



IMPROVING ACCESS - ROADS, TRANSPORT, BROADBAND

The remoteness of the area is compounded by poor roads, a decline in public and community transport and poor broadband. These all need to be tackled to make the area more inviting and viable for people to live and work in and visit.

Main priorities

- Public and community transport links
- Better roads
- Better broadband

RURAL LIVELIHOODS – OPPORTUNITIES FOR WORK AND LIVING IN EAST KINTYRE

In general there is a need to help make it more attractive for people to live and work in the area. Other themes also tackle this issue but in addition there is a basic need to support and nurture existing businesses, and help diversify and create new opportunities. Linked to this is the need to ensure that there are houses that local working families can afford.

Support for businesses could include supporting the fish factory to expand and developing workshop space for existing and new businesses, supporting diversification through initiatives like a local farmers market and the promotion of local produce and crafts.

Creating a local district heating scheme has also been suggested as a way of helping to reduce fuel costs, make best use of local natural resources and create some jobs.

Main priorities

- Support for existing and new business
- Renewable Energy Scheme
- Affordable Housing

AN ATTRACTIVE PLACE WITH GOOD COMMUNITY FACILITIES AND ACTIVITIES

An attractive community with good facilities and activities for local people can also be a great place for people to visit. The engagement process identified a number of additional facilities, activities and events as well as the need to improve the general environment of the area – for the benefit of locals and visitors alike!

Main priorities

- Play Park (Peninver)
- Wet weather activities in village halls
- Village in Bloom and village enhancement

ACTION



A guide to the first steps to be taken over the next 12 months

THEME 1: TOURISM DEVELOPMENT AND PROMOTION

PRIORITY 1

Harbour improvements and development

- Create mooring facilities to increase the number of yachts visiting Carradale
- Build toilet and shower facilities with dry rooms and child changing facilities

Action by

Network Carradale – Carradale Harbour Group (CHG), Lakeland Marine

PRIORITY 2

Develop outdoor activities

- Develop path networks
- Develop and promote adventure and outdoor activities e.g. adventure weekend packages for walking, cycling, fishing, nature watch and heritage tours, kite surfing etc.

Action by

Network Carradale, East Kintyre Community Council, Kintyre Way, local businesses and Visit Scotland

PRIORITY 3

Improve transport links for visitors

- Investigate feasibility of passenger service to link walking and cycling routes between Arran and East Kintyre

Action by

Network Carradale, East Kintyre Community Council, Kintyre Way and local businesses

ACTION

THEME 2: LOCAL SERVICES

| | |
|------------------|---|
| PRIORITY 1 | <p>Community Fuel Station</p> <ul style="list-style-type: none"> •Support Network Carradale – Energy Group •Recruit more interested people to the Group •Develop business plan •Secure grant funding (approx 100K) •Tender and procure for equipment |
| <i>Action by</i> | <i>Network Carradale – Energy Group</i> |
| PRIORITY 2 | <p>Out of hours health care</p> <ul style="list-style-type: none"> •Call meeting of patients group and involve local surgery practice manager •Lobby NHS Highland and Scottish Government about the impact of NHS out of hours service on remote rural communities •Work to establish a First Response project for East Kintyre using examples like Gigha, Comrie etc |
| <i>Action by</i> | <i>Patient group/local residents, NHS</i> |
| PRIORITY 3 | <p>Developing services for the elderly</p> <ul style="list-style-type: none"> •Support and develop existing action group •Research and develop a model of care for the elderly that for example might include community mini bus, befriending, shopping service) •Look to develop the care package in partnership with NHS, local authority, voluntary sector, Scottish Government •Secure funding for pilot |
| <i>Action by</i> | <i>Village services group of the East Kintyre Community Council</i> |

ACTION



THEME 3: IMPROVING ACCESS – ROADS TRANSPORT AND BROADBAND

PRIORITY 1

Public and community transport

- Lobby for more accessible (for disabled/elderly) buses, a late evening bus during the week and /or the weekend, and better connections with the Campbeltown to Glasgow bus
- Lobby to retain the Red Cross Bus Service

Action by

East Kintyre Community Council, Argyll and Bute Council, Carradale Surgery, Senior Citizens Group and users of the service.

PRIORITY 2

Roads

- Development of road maintenance and improvement program for the B842 and B879 – work with the local authority to identify priority areas for improvement and repair measures
- Publicise local enquiry line for reporting potholes and other related issues
- Enforce speed limits and parking restrictions
- Identify and lobby for more traffic calming measures (speed bumps, speed check signs, 20s plenty etc)

Action by

East Kintyre Community Council, Argyll and Bute Council, Strathclyde Police with support of local residents and businesses.

PRIORITY 3

Broadband & Mobile Signal

- Lobby Argyll & Bute Council, the Scottish Government, Broadband & Mobile providers to ensure that every home and business in East Kintyre can use these services to operate effectively.

Action by

East Kintyre Community Council, Argyll and Bute Council, Broadband and Mobile Phone providers.

ACTION

THEME 4: RURAL LIVELIHOODS – WORKING AND LIVING IN EAST KINTYRE

| | |
|------------------|---|
| PRIORITY 1 | <p>Support existing businesses</p> <ul style="list-style-type: none"> •Support expansion of the fish farm •Explore the development of business workshop space for trades and other businesses •Support the diversification of existing businesses •Explore the possibility of developing a local produce initiative and farmers market |
| <i>Action by</i> | <i>Local businesses working together, HIE, Business Gateway</i> |
| PRIORITY 2 | <p>Reducing energy costs and developing renewable energy</p> <ul style="list-style-type: none"> •Research into what other communities are doing, and what might be possible in East Kintyre •Developing proposals to reduce energy costs and develop renewable energy schemes e.g. district heating – using local resources, hydro, wind, etc. |
| <i>Action by</i> | <i>Network Carradale Energy group, local residents, local organisations (village halls) and businesses and Forestry Commission Scotland, Argyll and Bute Council and Registered Social Landlords</i> |
| PRIORITY 3 | <p>Affordable Housing</p> <ul style="list-style-type: none"> •Investigate potential for provision of more affordable housing for young people and families. |
| <i>Action by</i> | <i>East Kintyre Community Council working with Social Registered Landlords and local residents.</i> |

THEME 5: AN ATTRACTIVE PLACE WITH GOOD COMMUNITY FACILITIES AND ACTIVITIES

| | |
|------------------|--|
| PRIORITY 1 | <p>Play Park at Peninver</p> <ul style="list-style-type: none"> •Hold a public meeting to establish interest in having a Peninver playpark •Establish a constituted committee •Identify site, play park design and funding sources |
| <i>Action by</i> | <i>Local residents, parents.</i> |
| PRIORITY 2 | <p>Programme of 'wet weather' activities in Village Halls</p> <ul style="list-style-type: none"> •Organise a programme of activities through the Village Halls – bowls, films, badminton, volleyball etc. |
| <i>Action by</i> | <i>Village Hall committees and local businesses</i> |
| PRIORITY 3 | <p>Village in Bloom/Village enhancement</p> <ul style="list-style-type: none"> •Make the area more attractive – planting native trees and shrubs, and better maintenance of communal areas and open spaces |
| <i>Action by</i> | <i>East Kintyre Community Council, Forestry Commission, local residents</i> |

MAKING IT HAPPEN

Local lead organisations

Each of the themes in this action plan will be led by one of our local organisations. Contact us if you would like to get involved in supporting the development of projects and taking action to lobby for improvements. We need as many people as possible to support these initiatives.

| Themes | Lead local organisation | Key contacts | Contact details |
|--|---|------------------|-------------------------------|
| Tourism and Promotion | Network Carradale – Harbour Group | Alan Milstead | alanmilstead@gmail.com |
| Local Services | Network Carradale (Chair) | Alan Walker | walker872@btinternet.com |
| | Network Carradale – Energy Group | Shelagh Cameron | shelaghcameron@btinternet.com |
| | East Kintyre Community Council – Village Services | Catherine Forbes | info@mapmaker.com |
| Improving Access – roads, transport, broadband | East Kintyre Community Council | Stuart Irvine | irvine-carradale@fsmail.net |
| Rural Livelihoods – Jobs and Housing | Network Carradale – Energy Group | Shelagh Cameron | shelaghcameron@btinternet.com |
| An Attractive Community with good community facilities and activities | East Kintyre Community Council | Stuart Irvine | irvine-carradale@fsmail.net |

Working with other communities in South Kintyre

It will be vital for us to work with other communities in South Kintyre – especially where we have joint issues and opportunities. We will continue to work under the umbrella of the South Kintyre Development Trust to develop joint action that can benefit the whole peninsula.

The Trust have taken a lead role in helping communities to develop Community Action Plans and will be instrumental in helping to support our endeavours to implement priority projects over the next 5 years. In recognition of this important role Highlands and Islands Enterprise have provided funding to the Trust for a Local Development Officer.

SOUTH KINTYRE DEVELOPMENT TRUST
 3 Harveys Lane T: 01586 552870
 Burnside Square E: info@skdt.org
 Campbeltown
 PA28 6GE

EAST KINTYRE COMMUNITY ACTION PLAN



EAST KINTYRE COMMUNITY ACTION PLAN 2012-2017

This Community Action Plan sets out the priorities for the development of East Kintyre over the next 5 years as determined by the community through an extensive process of community engagement carried out over a four month period in late 2011 and early 2012.

THE PLAN CONTAINS:

- A summary of our Community Profile
- Our main likes and dislikes as identified in our Community Views Household Survey
- Our Vision Statement for the Future of East Kintyre
- The main themes and priorities for action
- Information on how you can stay in touch and get involved.

The Plan is for the whole community and is jointly owned by all the organisations and individuals that took part in its preparation. We will be working together to ensure its implementation over the next 5 years.

The project has been supported by Argyll and the Islands LEADER, Awards for All, South Kintyre Area Development Group, East and West Kintyre Wind Farm Trusts, Inspiralba and the volunteers of South Kintyre Development Trust.

South Kintyre Community Futures is a project organised and managed by the South Kintyre Community Development Trust and is being part-financed by the Scottish Government and the European Community Argyll and the Islands LEADER 2007-2013 Programme



Community Futures

South Kintyre Development Trust was assisted in the process of preparing Community Action Plans through the Small Town and Rural Development Group's Community Futures Programme. For further information contact:
www.stardevelopmentgroup.org